



CQI AND IRCA CERTIFIED
AUDITING COURSES.

***FOUNDATION COURSE
ISO 9001:2015
(QUALITY MANAGEMENT
SYSTEMS) – FD116.***

V9 Feb-25





NAVIGATION

Back to Home 

Back to Contents 

Back Page 

Next Page 

Go To 





CONTENTS

HELLO

Overview
Benefits
About rove
About CQI and IRCA



COURSE CONTENTS

ISO 9001:2015
(Quality Management Systems)



WHAT'S INVOLVED?

Duration
Requirements
Fees
What is included?
Progression



LEARNING WITH US

Delivery
Assessment
Your Learning Journey



QUESTIONS

Contact us



ENROL

Enrol Online





HELLO

FOUNDATION LEVEL COURSE ISO 9001:2015 (QUALITY MANAGEMENT SYSTEMS)

This course will provide delegates – who already have an existing, basic knowledge of, or experience in, quality management – with an understanding of the management systems approach and the requirements of ISO 9001.

It provides a basis for delegates who wish to go on to complete CQI and IRCA Certified QMS Auditor Training courses.





OVERVIEW

ISO 9001:2015 (QUALITY MANAGEMENT SYSTEMS)

This CQI and IRCA Certified Foundation QMS Auditor Training course will equip you to assess the conformance and performance of an organisations' quality management systems.

The course provides those – who already have an existing, basic knowledge of, or experience in, quality management – with an understanding of the management systems approach and the requirements of ISO 9001.

It provides an entry route for registration with the International Register of Certificated Auditors (IRCA), the professional body for management system auditors.

In itself, successful completion of this Foundation QMS course does not meet the training requirement to become an IRCA Certificated auditor. For the full training requirement, see [IRCA/1000](#).



HOW WILL YOU BENEFIT?

The CQI is a globally recognised brand and its specialist division IRCA (the International Register of Certificated Auditors) is a market leader with its Management Systems auditing training – approved by employers and industry.

By undertaking IRCA training and joining IRCA you join a global community of audit professionals. Here's why you should study a CQI and IRCA Certified training course:

With three levels of training (Foundation, Practitioner & Professional) and a variety of modular courses, you can create a learning programme perfectly tailored to your needs whatever your career stage.

Training is mapped to the CQI's Profession Map, so you learn the relevant, up-to-date skills employers want.

This certified training course provides the foundation for you to move towards IRCA membership.



ABOUT ROVE

rove has worked in partnership with the CQI and IRCA since 2010, delivering Certified training programmes, supporting quality management professionals develop and progress in their careers.

rove has been assessed and certified as an Approved Training Partner (ATP) by the CQI and IRCA. This means it has the processes and systems in place to deliver certified courses to the highest standards. The CQI and IRCA undertake ongoing assurance activities to ensure it continues to meet ATP requirements.

Since 2016, when the current courses were introduced, rove has worked with over 600 learners, from over 380 companies – both in the UK and Internationally. It has supported learners to achieve over 1,000 courses and over 100 individuals to achieve the prestigious Foundation, Practitioner and Professional Certificates in Quality Management.

rove's achievement rate is 100% and its first time exam pass rate is 90%



FOUNDATION LEVEL COURSE ISO 9001:2015 (QUALITY MANAGEMENT SYSTEMS) – FD116.

This course is a great introduction to the fundamentals of a Quality Management System and the requirements of the ISO 9001 standard.





INTRODUCTION TO ISO 9001:2015 (QUALITY MANAGEMENT SYSTEMS) FD116

OVERVIEW

This course will provide delegates who – already have an existing, basic knowledge of, or experience in, quality management with an understanding of the management systems approach and the requirements of ISO 9001. It provide a basis for those who wish to progress to the CQI and IRCA Certified QMS Internal Auditor Training.



4 WEEKS
(MINIMUM)



DEDICATED
TUTOR



DISTANCE
LEARNING



£395
(+VAT)

INDICATIVE CONTENTS

1. The purpose of a quality management system, of quality management systems standards, and the business benefits of improved performance of the quality management system.

- The purpose of a quality management system and the business benefits of improving the quality management system's performance.
- The processes involved in establishing, implementing, operating, monitoring, measuring, analysing, evaluating, reviewing, maintaining, and improving a quality management system, including the significance of these for QMS auditors.
- The terms and definitions defined and used in ISO 9000.

2. The structure and content of ISO 9001 and its relationship with ISO 9000.

- The structure and content of ISO 9001 with reference to the PDCA cycle and the model of a process-based quality management system.
- The relationship between ISO 9001 requirements and ISO 9000 with reference to the seven quality principles.

TOPIC AREAS

Management systems, audit

CERTIFICATION

Certificate of Completion



INTRODUCTION TO ISO 9001:2015 (QUALITY MANAGEMENT SYSTEMS) FD116

3. The specific quality management related requirements of ISO 9001.

- The relationship between the external and internal issues, the relevant requirements of relevant interested parties, the actions to address risks and opportunities, and the quality management system processes needed to implement them.
- The purpose of the scope of a quality management system and what should be considered when determining it.
- The purpose of a quality policy, the relationship between the quality management system scope, and the quality policy and the requirements for its content, implementation and review.
- The role of top management for the effectiveness of the quality management system.
- The requirements for quality objectives and the relationship between them, the quality policy and management review.
- The resources needed to achieve customer satisfaction and conformity to product and service requirements and the requirements for support.
- How an organisation plans, implements and controls the processes needed to meet quality management system requirements, and how any externally provided processes, products and services are controlled.
- The typical processes and associated process controls required to achieve customer satisfaction and conformance of product and service with requirements.



WHAT'S INVOLVED?

Read on to find out how long this course takes, what the entry requirements are and how much it costs.





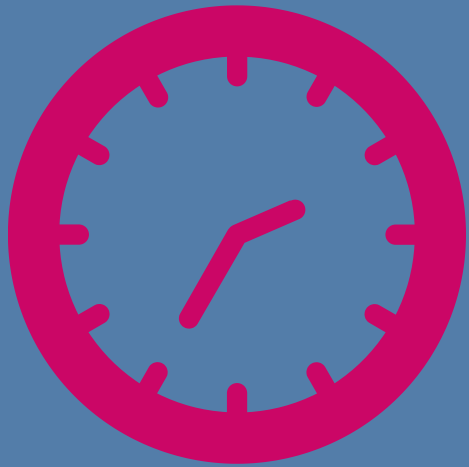
HOW LONG DOES IT TAKE?

TYPICAL COURSE DURATION: 4 WEEKS

This assumes you can commit to at least 4 hours of study each week. You and your tutor will agree your planned end date during your induction.

The **minimum** learning hours for the course is **7**. The course resource is comprehensive and so study time can exceed this if you wish to get more out of the course.

The **maximum** course duration, set by the CQI and IRCA, for each course is **6 months**.





WHAT ARE THE ENTRY REQUIREMENTS?

RECOMMENDED PRIOR KNOWLEDGE

1: Management systems

- The Plan, Do, Check, Act (PDCA) cycle
- The core elements of a management system and the interrelationship between top management responsibility, policy, objectives, planning, implementation, measurement, review, and continual improvement.

2: Quality management

- The fundamental concepts and the seven quality management principles (see ISO 9000)
- The relationship between quality management and customer satisfaction.

3: Quality management terms and definitions

- The commonly used quality management terms and definitions (see ISO 9000).

Unsure which level or course is right for you?

[Use the IRCA tool to help.](#)





WHAT ARE THE COURSE FEES?



£395 (+VAT) PER COURSE

A **10% discount** will be applied if you enrol on this course, in addition to our Foundation or Practitioner Certificate Quality Management.

- £355.50 (+VAT) – 10% discount applied.

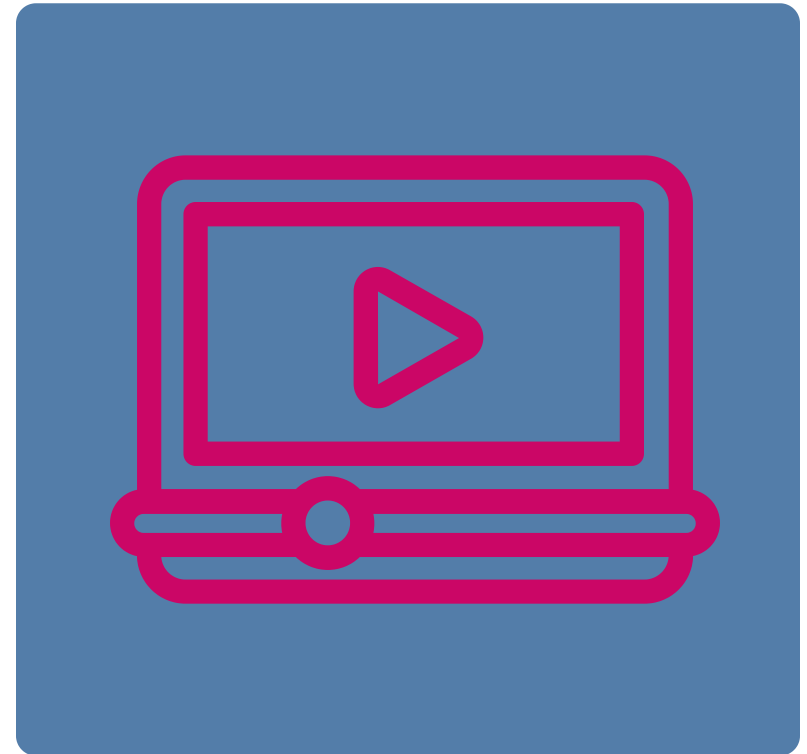


WHAT IS INCLUDED?

Course fees cover tutorial support, course induction, learning, assessment and support materials, an account for our learning management system and CQI and IRCA registration and certification.

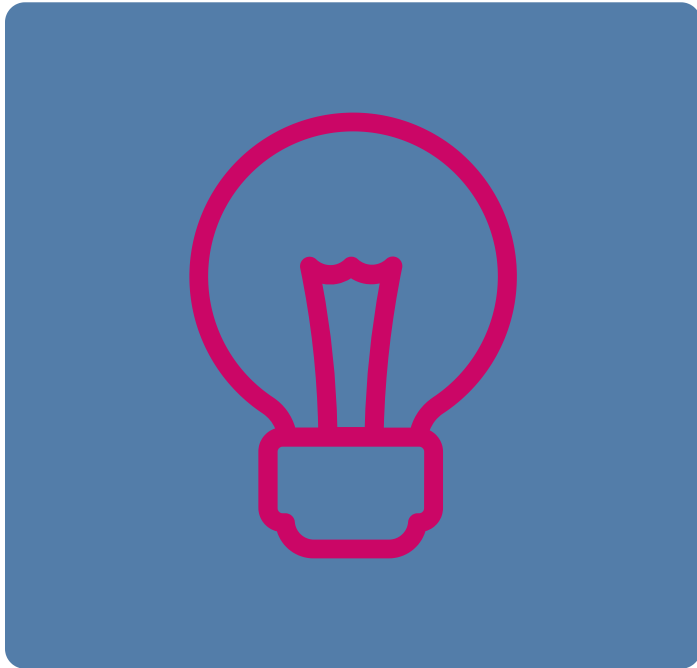
You will need a copy of the ISO 9001:2015 'Quality Management Systems Requirements' standard to reference while completing this course. This is not provided and without it, this course will be very challenging to successfully complete.

A reference copy of ISO 9000:2015 – 'Quality Management Systems – Fundamentals and Vocabulary' would also be beneficial while completing the course.





PROGRESSION



On completion you might want to consider progressing to the:

- ISO 9001:2015 Internal Auditor (Quality Management Systems) course (PT236)

This will provide you with the knowledge and skills required to perform an internal audit of part of a quality management system based on ISO 9001 (or equivalent), and report on the effective implementation and maintenance of the management system in accordance with ISO 19011.

It will also support your IRCA membership application.



HOW WILL I LEARN?

This section covers our delivery method, how you'll be assessed and your learning journey.





DELIVERY



FLEXIBLE LEARNING

You can study when you want – rove's systems provide you with 24/7 access to course materials and assessments. This means:

- You're not constrained to set dates/times for training – you can start when you're ready and study at a time that best suits you.
- You can complete your training at a pace that's right for you – if you have more time than expected you can accelerate your learning.

Your dedicated tutor will provide a comprehensive induction and offer timely advice, support and feedback throughout your course.



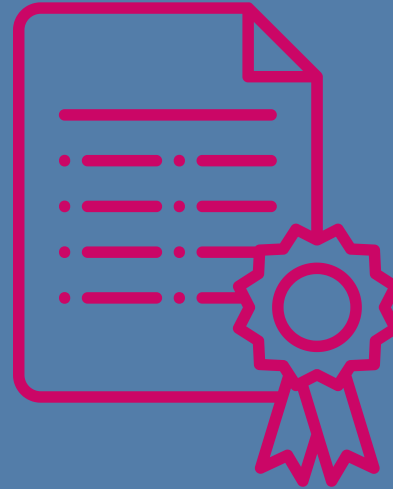
ASSESSMENT

ASSESSMENT & CERTIFICATION

Assessment for the course is via workbook completion.

Your tutor will assess and provide feedback on your submissions.

On completion of the course workbook, you will be awarded a Certificate of Completion.





DELIVERY



SUPPORTED DISTANCE LEARNING

rove's supported distance learning model means you can study when you want – its systems provide you with 24/7 access to course materials and assessments and your dedicated tutor will provide timely advice, support and feedback throughout your course. This means:

- You're not constrained to set dates/times for training – you can start when you're ready.
- You can complete your training at a pace that's best for you – if you have more time than expected you can accelerate your learning and complete earlier than planned.
- You can access course learning, assessment and study support materials, receive feedback and support.

YOUR LEARNING JOURNEY





QUESTIONS?

If you have any questions, please get in touch with us:

- +44 (0) 191 670 9529 or
- info@roveconsultancy.co.uk





ENROLMENT

*YOU CAN ENROL ONLINE
HERE.*

Once we receive your completed form, we will process your application and issue an invoice for course delivery.

Following payment, we will contact you to with everything you need to get started.

